

A large Brazilian flag is displayed outdoors, featuring the green and gold fields, the blue globe with white bands, and a white banner at the bottom. The flag is slightly tattered and set against a background of trees and a building. Overlaid on the flag is the text "Annual Report" in white and "2024" in green.

Annual Report

2024

SO S MATA ATLÂNTICA



SOS Mata Atlântica Foundation

Rodovia Marechal Rondon, KM 118

13312-000 - Bairro Porunduva – Itu/SP

Tel.: +55 (11) 3262-4088





Table of Contents

Introduction	3
2024 Highlights	6
Knowledge	12
Our causes	
• Clean Water	14
• Protected Areas and Biodiversity	17
• Forest Restoration	20
• Environmental Education	22
Public Policies	24
Mobilization	26
Building Institutional Capacity	
• Diversity, Equity and Inclusion (DEI)	29
• Infrastructure and Operations	32
Partnerships	34
Transparency	37



INTRODUCTION

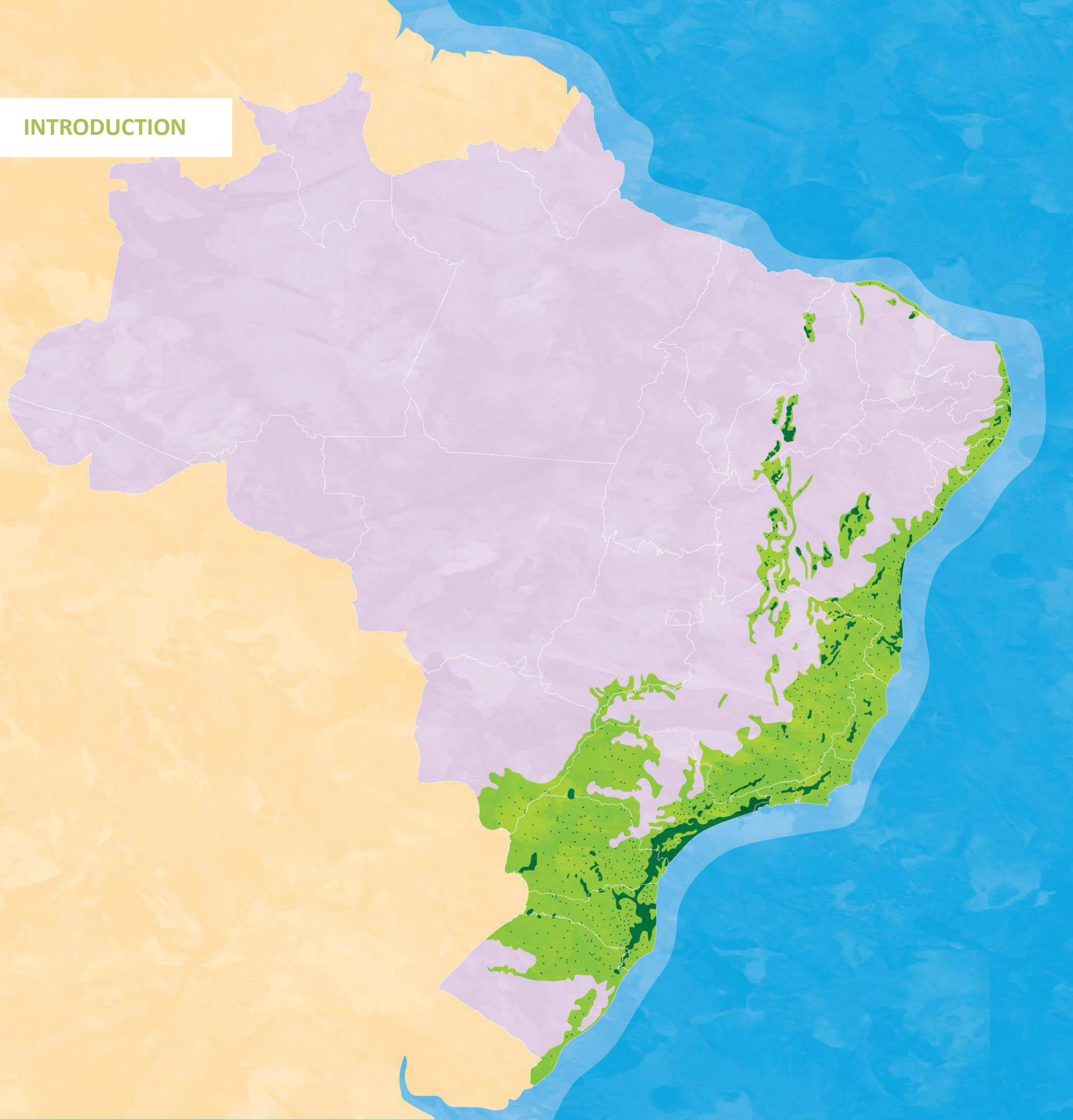
Connections That Strengthen the Atlantic Forest

In 2024, we felt the impacts of climate change more deeply than ever across all areas of our work. We watched with concern as wildfires affected the protected areas we support, including Itatiaia National Park and restoration sites within the Forests of the Future program. We documented coral bleaching in the Costa dos Corais Environmental Protection Area and had to pause environmental education activities at our headquarters due to intense heatwaves. Alongside volunteers from the Observing the Rivers initiative, we tracked how droughts and floods affected water quality in various regions across the country.

The destruction of the Atlantic Forest, once just a warning sign, has now become a pressing challenge we must overcome. With the climate growing increasingly unstable, protecting and restoring this biome is crucial, not only for the biodiversity it supports, but also because it is home to most of Brazil's population, including its most vulnerable communities, who feel the impact of the crisis the most.



INTRODUCTION



Forests, high-altitude grasslands, *restingas* and mangroves play a vital role in lessening the impact of extreme weather and helping communities adapt. That's why we reaffirm our commitment: we act on knowledge and evidence, strengthen policies and support public management, restore ecosystems, engage communities and train new generations to protect this biome.

And there's reason for hope. Deforestation rates have fallen. The Atlantic Forest Law is still standing strong despite many challenges. Degraded areas are already showing signs of recovery. We continue to move forward, fully aware that the journey is long, but possible when we walk together as a network.

The Atlantic Forest:

- 15% of Brazil's land area
- 24% of the original area



INTRODUCTION

None of this would be possible without the dedication of so many people and organizations. We are grateful to our teams, boards, volunteers, partners, environmentalists, managers, scientists, supporters, donors, sponsors, communities, communicators and all our allies along the way. This network of trust, knowledge, and care forms the foundation of our work and fuels everything we do.

This report is more than a technical summary. It is a snapshot of a year full of active hope from those who believe that by protecting the Atlantic Forest we are protecting Brazil and its future.

The Atlantic Forest is alive. And as long as there are forests to protect, rivers to restore, and communities to mobilize, the SOS Mata Atlântica Foundation will keep working.

We continue to stand for life!

Marcia Hirota,
Chair of the Board, SOS Mata Atlântica Foundation



Measurable Impacts on the Atlantic Forest

Next, we present a consolidated overview of the year's main results:

✓ Knowledge

We published data from the **Atlas of Forest Remnants** and the **Deforestation Alert System (DAS)**, showing a 55 percent decrease in deforestation during the first half of the year.

We released a groundbreaking technical report on fire, revealing that the burned area was **three times larger** than the deforested area.

We published scientific articles on ecological restoration, carbon, coffee and native species.



Restoration



We dedicated nearly 2.5 million square meters to new forests in 2024

A total of 242.49 hectares of degraded land began restoration through our projects.

Forests of the Future Celebrating 20 years

We have reached around 6,200 **hectares** of designated areas, working alongside a broad network of partners.

We engaged in technical exchanges, participated in events like the **Brazilian Society for Ecological Restoration** meeting and formed new partnerships.

Clean Water

Observing the Rivers Program

- About 2,000 active volunteers
- 112 rivers and water bodies monitored
- Operating in 14 states throughout the year.

Expansion into the Pantanal and Cerrado regions, in partnership with the SOS Pantanal Institute.



6 projects selected in the Rio Pinheiros Call for Environmental Education and nature-based solutions.



✓ Environmental Education

Reached 5,000 people through courses, workshops and training sessions.

Expanded the **We Are Atlantic Forest** course to new regions and protected areas.

New editions of the **Atlantic Forest Goes to School** and **Learning with the Atlantic Forest** courses.

✓ Protected Areas and Biodiversity

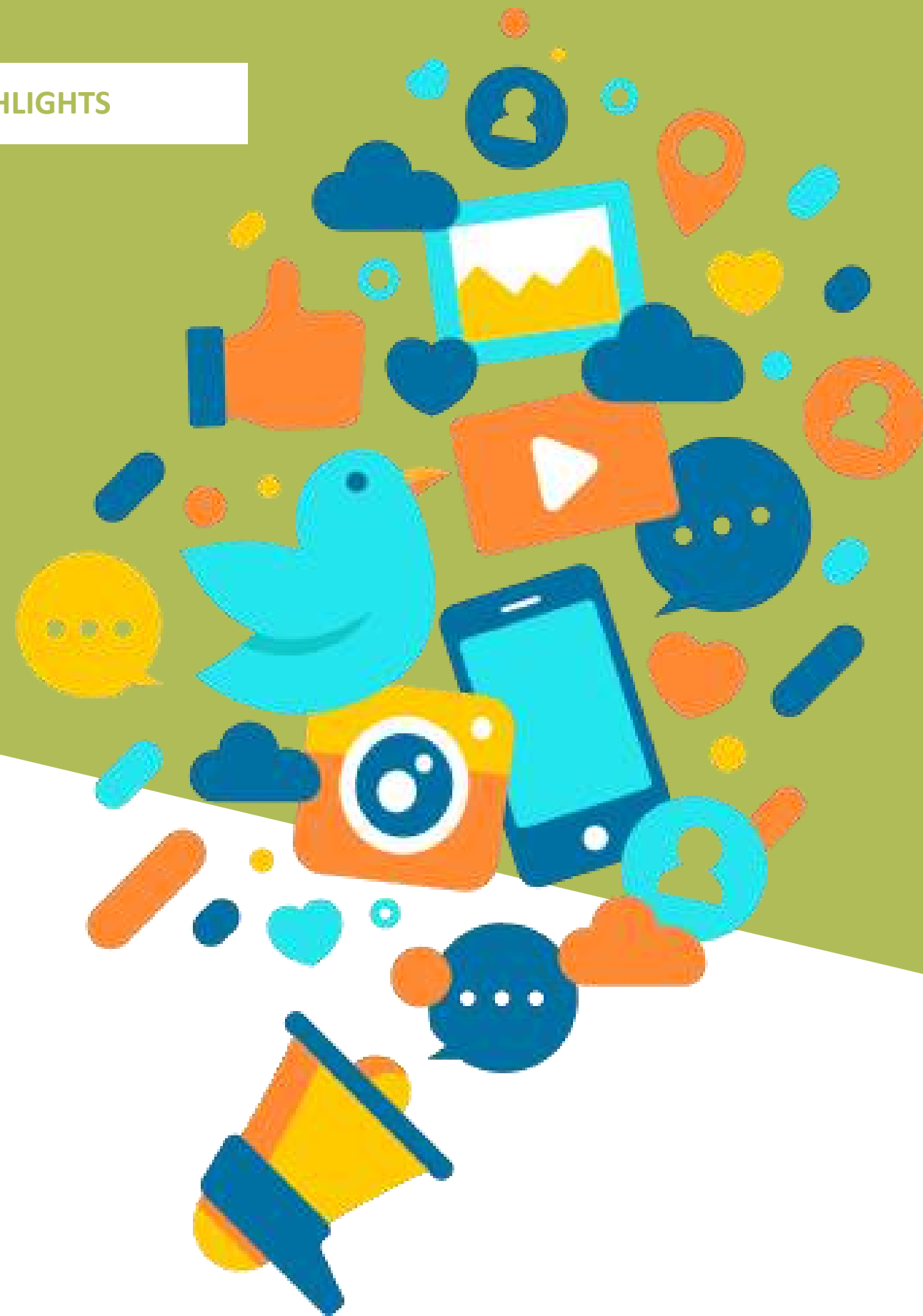
Agreement with the Ipanema National Forest and improvements in forest infrastructure.



[Support for 7 new Private Natural Heritage Reserves \(RPPNs\)](#)

Active participation in the National Biodiversity Commission.





✓ Mobilization

Over 5,700 mentions

in national media, including top [outlets](#) such as Valor Econômico, Nexo and Folha de S.Paulo.



Growth in audience and engagement across social media platforms.



Special campaigns and extensive coverage at major international events like the Biodiversity COP and the Climate COP.

✓ Public Policies

Advocacy against the “Destruction Package” and Bill 364/19.

Participation in official sessions at the Senate and the House of Representatives.

Coordination of the **9th Meeting of Environmental Agencies from the Atlantic Forest region.**

✓ Building Institutional Capacity

Launch of the **Diversity, Equity, and Inclusion (DEI)** program.

Renovations and improvements at our headquarters in Itu (São Paulo).

Expansion of partnerships with companies, foundations and civil society networks.



KNOWLEDGE

Reliable Data and Information Are Key to Protecting and Restoring the Atlantic Forest

Generating and sharing knowledge continue to be central to the SOS Mata Atlântica Foundation's work



In March, we held a technical workshop at our headquarters, bringing together MapBiomass researchers, scientists and civil society groups to discuss Atlantic Forest data and find ways to improve it. In May, we launched the [Annual Report of the Atlas of Atlantic Forest Remnants](#), in partnership with INPE, updating historical deforestation data for the biome. We also released data from the new Deforestation Alert System (SAD), which enables more frequent and dynamic monitoring of deforestation hotspots. [Two partial reports were published during the year](#)—one in August and another in November—showing a 55% drop in deforestation during the first half of the year.

KNOWLEDGE



The Foundation broadened its role in scientific production, going beyond technical data. We contributed to studies on [ecological restoration](#), [carbon and coffee](#), native species and the importance of the Atlantic Forest Law. These insights were shared widely through major outlets like Valor Econômico and Nexo Jornal, helping to connect science with the wider public.

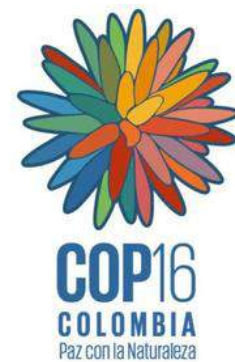


To close the year, in partnership with IPAM, we released a [groundbreaking technical report on fire in the biome](#). The report revealed that **the forest area burned in 2024 was three times larger than deforested area during the first half of the year**, underscoring the escalating impact of climate change and the water crisis on remaining forest fragments.



[LEARN MORE](#)

International Events



We brought the message of protecting and restoring the Atlantic Forest to the world's most important international environmental events. At **COP 16**, the UN Biodiversity Conference in Cali, Colombia, we presented a study outlining guidelines for implementing the Global Biodiversity Framework in the biome.



[LEARN MORE](#)



At the **Climate Conference** in Azerbaijan, we launched the [latest data from the Deforestation Alert System](#), took part in a panel at the Brazil Pavilion focused on aligning climate and water agendas, joined another at the Action on Food Hub Pavilion on regenerative agriculture and forest restoration, and provided support to the Silent March for Climate and to civil society spaces across the event.

Clean Water

The Clean Water cause grew stronger in 2024 as we deepened our work with communities and expanded our reach beyond the Atlantic Forest. It was a year marked by major innovations, including the launch of the Rio Pinheiros Call for Proposals, the expansion of the Observing the Rivers program into the Cerrado and Pantanal biomes, and a stronger presence in strategic areas like Espírito Santo.



OUR CAUSES

In 2024, the Observing the Rivers program engaged around 2,000 volunteers to monitor 112 rivers and water bodies across 67 municipalities in 14 states within the Atlantic Forest.

With support from Ypê, we continued and strengthened the program's core activities.

In partnership with the *Águia Branca* Reserve in Espírito Santo, we established four new monitoring sites and reinforced six existing ones, expanding the volunteer network's reach in the state.



Water Quality in the Atlantic Forest and the State of the Tietê



On World Water Day (March 22), we released the report: [A Portrait of Water Quality in the River Basins of the Atlantic Forest](#)

The report revealed local progress in the preservation of water bodies.



On Tietê River Day (September 20), we launched a [water quality report for the Upper and Middle Tietê basins](#)

The analysis revealed that the length of the polluted stretch of the Tietê River increased for the second year in a row, reaching 162 kilometers—10 kilometers longer than in 2023.

Water as a Key Indicator of Global Change

In a year marked by extreme climate events, such as the heavy rains that devastated Rio Grande do Sul and droughts that reduced the flow of Amazonian rivers while fueling wildfires in the Pantanal, water once again proved to be one of the clearest signs of the planet's ongoing changes.

Protecting, monitoring and restoring water and its ecosystems is essential to safeguarding the future of our cities, forests and all life.



Protected Areas and Biodiversity

The year 2024 was packed with activities, new partnerships and important launches that advanced the SOS Mata Atlântica Foundation's territorial strategy. We solidified efforts in key regions, improved collaboration across departments and expanded support for managing and implementing Conservation Units (UCs) and Private Natural Heritage Reserves (RPPNs).

OUR CAUSES

Protected Areas and Biodiversity



In January, we signed a cooperation agreement with Ipanema National Forest (FLONA Ipanema) to support the implementation of its management plan. This Conservation Unit lies within the Tietê River basin, an area with few large protected forest fragments. With support from Salesforce, the project has already upgraded infrastructure, enhanced public access, engaged volunteers and carried out other initiatives, such as renovating FLONA's plant nursery, in order to boost its contribution to forest restoration in the region.



The first immersive edition of the **We Are Atlantic Forest** course took place at Itatiaia National Park, bringing together 18 educators. The program was organized in partnership with the Park and the municipalities of Resende and Itatiaia.



We renewed the Cooperation Agreement with the **Costa dos Corais Environmental Protection Area (APA)**. In 2024, more than 740 animal strandings were attended to, and over 350 people were trained to identify invasive species within the APA.

OUR CAUSES

Protected Areas and Biodiversity

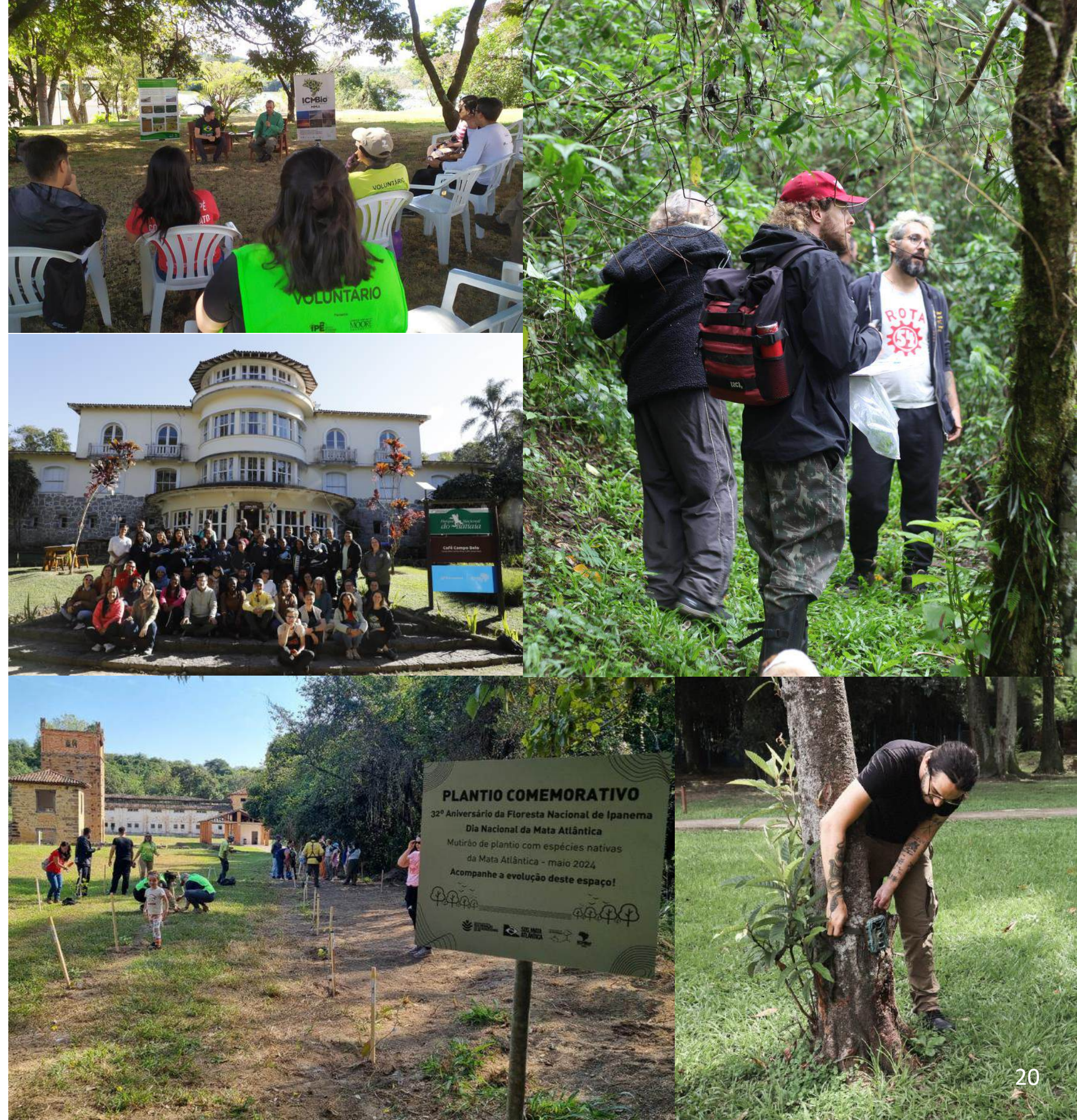


A new **RPPN Call for Proposals** was launched, focused on the Mantiqueira and Bocaina mountain ranges. [Seven projects were approved, which will protect approximately 1,140 hectares of land.](#)



We supported **Serra da Bocaina National Park** with trail management, visitor monitoring and strengthening its volunteer program.

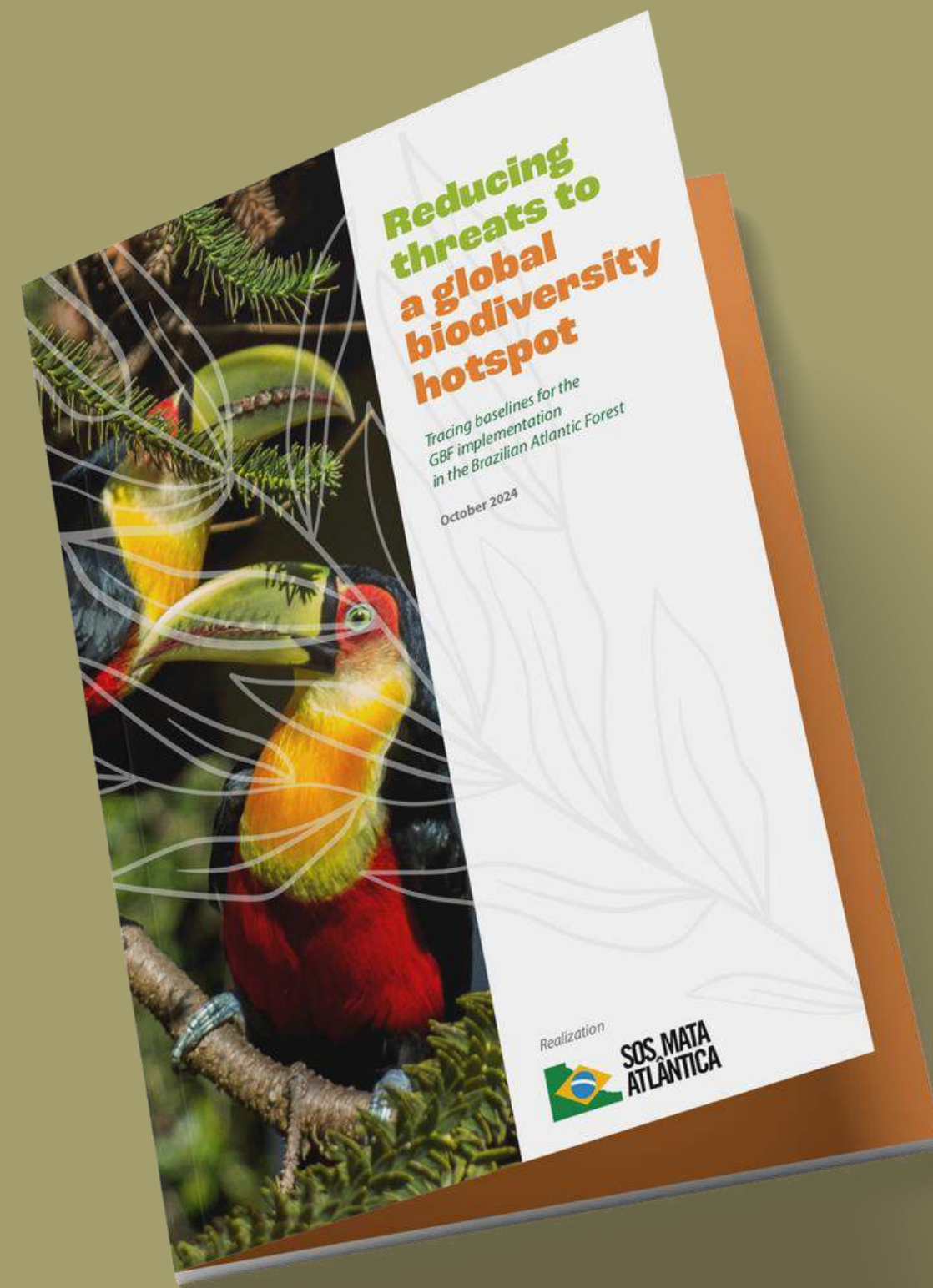
In 2024, these protected area support efforts were carried out in partnership with organizations including Salesforce, the Embassy of France in Brazil, Airbnb, Klabin, Instituto Humanize, Fundação Toyota do Brasil, and LATAM, which helped with event logistics.



Biodiversity

We also published a document addressing the main targets of the Global Biodiversity Framework and how they apply to the reality of the Atlantic Forest, drawing on our own data and that of various research and conservation initiatives. The launch took place during an event organized by the Brazilian Association of State Environmental Entities (ABEMA).

In 2024, the Foundation also became an official member of the National Biodiversity Commission (CONABIO), which was reinstated after having been dissolved under previous administrations. Elected as the civil society representative for the Atlantic Forest biome, the Foundation took part in the Commission's regular meetings, which addressed, among other topics, the national targets for the Strategy and Action Plan for Biodiversity (EPANB), aligned with the UN's Global Biodiversity Framework.



Forest Restoration

In a year marked by climate extremes and institutional progress, forest restoration became an even stronger strategic priority for the SOS Mata Atlântica Foundation.

In 2024, our **Forests of the Future** program marked its 20th anniversary, having restored around **6,200 hectares**, carried out **306 projects**, and planted over **11.7 million native trees**. These efforts are estimated to have removed about 2 million tonnes of CO₂ equivalent from the atmosphere. This year, the program made progress in key territories, with a special focus on the Paraíba Valley and ongoing projects in Aparecida (São Paulo), including planting activities, education programs and fire prevention measures..



New calls for proposals and partnerships were created to connect restoration with income generation, food production and climate adaptation. A promising and urgent path forward.

The year also saw important milestones, including the update to the National Policy for the Recovery of Native Vegetation (PLANAVEG), launched at the UN Biodiversity COP in Cali. This policy sets new guidelines for large-scale forest restoration in Brazil.

Key 2024 achievements include:

- Restoring a total of **242.4968 hectares and planting over 606,000 native Atlantic Forest tree seedlings** through the Forests of the Future program.
- Launching the [Restoration Routes](#) initiative, which shares inspiring stories of successful restoration by giving a voice to everyone involved, from landowners to plant nursery workers.
- Kicking off a restoration and environmental education project in Hortolândia (SP), with targeted planning and actions already in motion.
- Support for the creation of the Fruta do Lobo Private Natural Heritage Reserve (RPPN) in São Paulo, with 26.6 hectares undergoing ecological restoration.
- Technical exchanges with *Legado das Águas* (seedling production) and the Black Jaguar Foundation (restoration and fundraising), each involving seven technical staff participants.
- Implementation of a collaborative agroforestry system at our headquarters, engaging 25 staff members to strengthen the connection between conservation and food production.



OUR CAUSES

Environmental Education

Inspiring a New Relationship with the Biome

Environmental education remains one of the SOS Mata Atlântica Foundation's most dynamic areas, providing transformative experiences, empowering schools and connecting educators and students with the reality of the Atlantic Forest.

OUR CAUSES

Environmental Education



In 2024, another edition of the [Learning with the Atlantic Forest](#) program welcomed students and teachers to the Center for Forest Experiments in Itu (São Paulo), a leading hub for education, restoration, and conservation. A new stage was added to the program, with the Foundation's team visiting participating schools beforehand to strengthen the connection between classroom learning and hands-on activities. Highlights included “Coffee with Conversation” sessions for educators and guided tours for students.

We also expanded the We Are Atlantic Forest course, holding new editions in the Paraíba Valley (SP) and Cotia (SP), and, for the first time, an immersive version inside a Conservation Unit, at Itatiaia National Park (RJ). This edition was supported by the municipalities of Resende and Itatiaia, along with Instituto Romã. The course combines theoretical learning, sensory exploration and creating local action plans, empowering educators as agents of change.

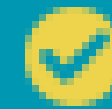




Other highlights include:

- **Mata Atlântica Goes to School:** a nationwide remote course offered in partnership with Instituto Singularidades, reaching educators from various regions of the country.
- **Mini-forest at School:** two editions held in 2024, conducted in person at schools in Itu (SP) and Aparecida (SP), providing hands-on planting activities, workshops and content production activities for educators and students.

Environmental education is becoming an increasingly important strategy for collective change, both in restoring the biome and in deepening people's connection to their land.



The results reflect the reach and impact of our work:

- Over **5,000 people** reached directly through environmental education activities in 2024.
- **22 schools** participated and **24 projects** were developed in different regions.
- **87 pedagogical coordinators** received training in Cotia (SP), using outdoor education methodologies.

This work was made possible through partnerships with organizations such as the HEINEKEN Group and AstraZeneca, as well as the active involvement of municipal education departments, school communities and managers of protected areas.

Institutional Advocacy to Protect Laws, Prevent Rollbacks and Deepen Commitment to the Biome

Amid continuing threats to Brazil's environmental laws, the SOS Mata Atlântica Foundation stayed actively engaged in Brasília, working closely with civil society partners to advance the socio-environmental agenda and foster dialogue between science, politics and society.



The Public Policy Department worked on multiple fronts:



✓ Defending the Atlantic Forest Law and opposing the “Destruction Package.”

We produced a technical report opposing Bill 364/2019, which aims to weaken protections for native grasslands and other non-forest ecosystems. The bill would allow these areas to be cleared and converted for other uses without the need for environmental licensing. This proposal, which directly threatens the integrity of the Atlantic Forest Law, was contested for its technical flaws and legal inconsistencies.

We participated actively in advocacy to prevent rollbacks in the Forest Code and in measures that threatened Legal Reserves, Permanent Preservation Areas (APPs), Conservation Units and collective rights. We joined the Climate Observatory, the Water Governance Observatory and the Parliamentary Environmentalist Front in meetings, public hearings, and initiatives—such as the Mobilization in Defense of the Atlantic Forest event, held in Minas Gerais in partnership with the Minas Gerais Public Prosecutor’s Office—which received broad media coverage.



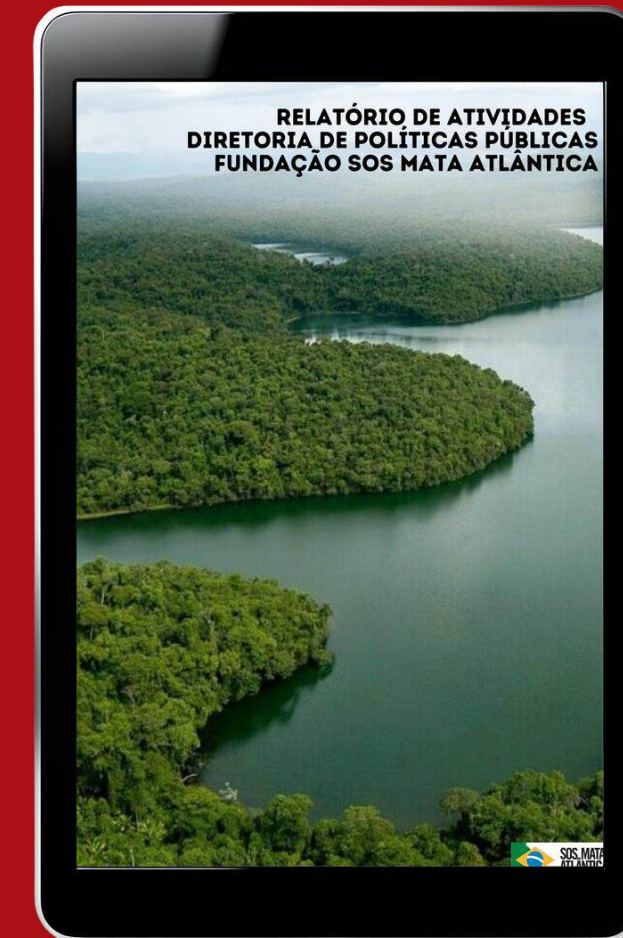
Strategic political engagement

- We joined the Advisory Council of the Parliamentary Environmentalist Front, taking part in regular meetings and contributing to the legislative priority agenda in the lead-up to COP 30.
- We proposed guidelines to turn forest restoration into an inclusive public policy that supports sustainable development.
- We coordinated actions with parliamentarians committed to advancing climate, water, biodiversity, and the rights of traditional peoples.



Institutional mobilization events

- We took part in formal sessions in both the Senate and the House of Representatives marking Atlantic Forest Month, with a strong presence from the Foundation and public statements from our leaders.
- We organized the 9th Meeting of State Environmental Secretariats from the Atlantic Forest, which featured the participation of Minister Marina Silva and André Lima, Special Secretary for Deforestation Control at the Ministry of the Environment, further consolidating the Foundation's role as a key convener of public policy for the biome.



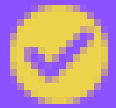
The Foundation continued to unite technical knowledge and social mobilization to influence decisions shaping the present and future of the Atlantic Forest. In 2024, more than just resisting, we advanced.

Amplifying Voices, Data and Stories from the Atlantic Forest

In 2024, the SOS Mata Atlântica Foundation increased its presence in the media and on social networks, raising awareness for environmental causes by sharing new data, opinion pieces and leading public mobilization. Communication played a key role in combating denialism, championing science and connecting society with the urgent reality of conserving the Atlantic Forest.

In 2024, communication went beyond simply informing: it brought people together. With credibility, engagement and the power to mobilize, it raised the profile of the biome and made its protection a shared cause.





In the Press

Throughout the year, the Foundation was featured in Brazilian outlets such as *Valor Econômico*, *Folha de S.Paulo*, *Nexo Jornal*, *O Globo*, *Estadão*, *UOL*, *Época Negócios*, *Exame*, *Jota*, *G1*, *GloboNews*, and others, with over 5,700 media appearances.



The main topics covered included:

- Data from the Atlas and the Deforestation Alert System (SAD);
- Articles on forest restoration and climate;
- Legislative threats to the Atlantic Forest;
- The water crisis and extreme climate events;
- Institutional mobilizations and impactful projects.



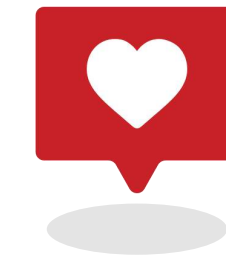
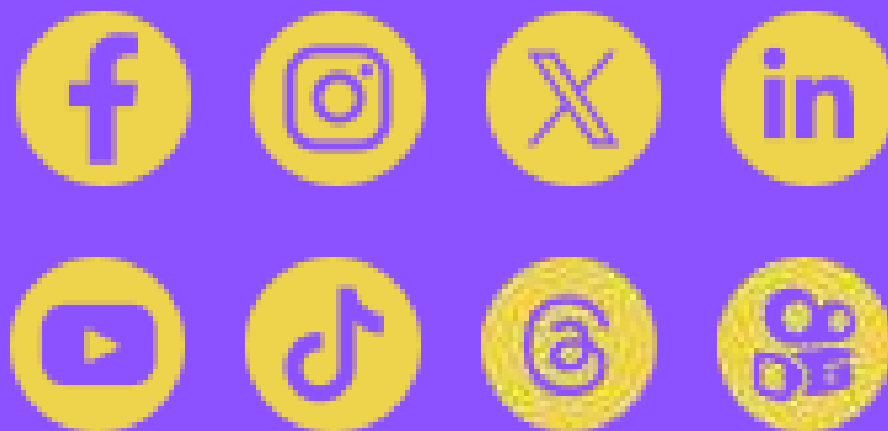
Folha Social + selected [Atlantic Forest: Regenerate and Preserve](#)

as one of its causes of the year for 2024, becoming one of the Foundation's partners.

On Social Media

We are reaching more people than ever across a variety of platforms, growing on established channels and expanding into new ones like Threads, Kwai and Bluesky.

In 2024, SOS Mata Atlântica saw strong growth on strategic platforms, gaining over 21,000 new followers on Instagram and 9,000 on LinkedIn. Across all networks, we welcomed nearly 49,000 new followers.



Instagram remains our most active and engaging platform, with more than **21 million impressions**, over **450,000 interactions**, and **57,000 shares** in 2024.

MOBILIZATION



Special campaigns and materials engaged audiences on key dates such as Atlantic Forest Day and Water Week, as did other original initiatives such as the [River Correspondents](#) project.



Biodiversity and Climate Conferences

We spread the message that the Atlantic Forest can be part of the solution to the climate and biodiversity crises through pins featuring native species, as well as posters, t-shirts, brochures and leaflets. For the first time, the Foundation had its own stand at the Climate COP, providing a space to showcase our work and engage directly with participants from around the world.

MOBILIZATION



Viva a Mata

Once again, [Viva a Mata](#) stood out as one of the year's main mobilization and celebration events for the Atlantic Forest. Held from May 23 to 25 under the theme “Part of You”, it underscored the deep connections between people, territories and knowledge.

The [program](#) brought together culture, art and nature, featuring musical performances, a graffiti workshop with artist and activist Mundano, storytelling sessions, and a guided trail experience at the Jaraguá Indigenous Land in São Paulo.





Caring for Our Home, Changing the World

For an environmental organization to achieve real and lasting impact it must have a consistent structure, a diverse composition, efficient operations and strong connections with partners who share its mission. In 2024, the SOS Mata Atlântica Foundation invested in building a strong institutional foundation capable of sustaining and expanding its vital initiatives.

Diversity, Equity and Inclusion (DEI)

In 2024 the SOS Mata Atlântica Foundation embarked on a new and essential journey to become a more diverse, inclusive and equitable organization, both in its makeup and in how it engages with society and the territories where it operates.

Recognizing that diversity strengthens its mission and broadens its capacity to create real change, the Foundation adopted a structured and participatory approach that shaped the year with concrete actions:

- We conducted an internal diversity census led by [Diversitera](#) to map the team's composition, identify priorities and challenges;
- We established an internal Working Group (WG) with representatives from different areas and levels of the organization to propose pathways, reflect on practices and monitor the Foundation's actions;
- We held awareness and training workshops, supported by [Diáspora Black](#), creating spaces for dialogue, collective learning and building a more inclusive institutional culture.

SOS MATA ATLÂNTICA by Contato Seguro

Você está em um **ambiente seguro** para falar com a gente.

O que você gostaria:

- ☒ Fazer relato
- ☐ Tirar dúvida
- ☐ Dar sugestão

Continuar

BUILDING INSTITUTIONAL CAPACITY

- Promoted exchanges with other organizations experienced in DEI, fostering the sharing of experiences and best practices;
- Implemented the first affirmative policies and institutional guidelines focusing on recruitment, inclusive language, workplace culture and representation;
- Extended maternity and paternity leave beyond the legal minimum.

This transformation is a continuous process but is already producing tangible results in organizational culture, communication, hiring practices and in actively listening to the diverse voices that make up and surround the Foundation.

The SOS Mata Atlântica Foundation believes that defending the biome also means defending people. All people. Environmental justice can only be achieved when we move inside and outside the institution toward equity.





Infrastructure and Operations

The headquarters of the SOS Mata Atlântica Foundation, located at the Center for Forest Experiments in Itu (SP), is more than a physical space: it is a living environment where forest, science, education and culture come together. In 2024, significant improvements were made to increase comfort, functionality and integration for teams, visitors and partners.



Improvements made:

- Complete renovation of the pantry and kitchen, making the space more suitable for daily interaction and for hosting institutional events;
- Upgraded the auditorium's large screen to enhance the quality of presentations, courses, meetings and workshops;
- Adjustments made to better accommodate in-person and training events, including environmental education gatherings, partner seminars and activities for the Learning with the Atlantic Forest program.

These upgrades demonstrate the Foundation's commitment to the well-being of its team and to providing high-quality experiences for educators, students, technicians and visitors, while also strengthening the institutional infrastructure needed to expand its impact.

Beyond the headquarters, 2024 also brought investments in data security, resource management and cross-departmental integration, all aimed at making operations more efficient, transparent and sustainable.

Alliances that Multiply Impact, Mobilize Resources and Strengthen the Biome

In 2024, the SOS Mata Atlântica Foundation solidified its role as a catalyst for solutions by working alongside companies, foundations, governments, universities, social movements and local communities. Partnerships were essential for expanding the reach of our actions, fostering innovation and ensuring the sustainability of our programs.



Our Partnerships team worked closely with every department, supporting both project development and securing funding for strategic initiatives. This support was essential to advance our conservation, restoration, education and public policy work.



Strategic Support

In 2024, we diversified our funding sources and increased access to international donations. Key partners included Instituto Itaúsa, Fundação Sol de Janeiro, CGM and Instituto Clima e Sociedade (iCS).

We also renewed and expanded strategic partnerships with Heineken, Cariuma, and Ypê, along with several long-term partners who have supported us for over four years, such as iFood and Mol Impacto.



Participation in International Events

Our involvement in major global events opened new strategic alliances and created opportunities for international cooperation in the coming years. Highlights included:

- NY Climate Week in New York.
- COP 16 on Biodiversity in Cali, Colombia.
- COP 29 on Climate in Azerbaijan.
- Events hosted by the Bezos Earth Fund in New York and the Rockefeller Foundation in Italy.



[Discover the Foundation's partners](#)



Call for Proposals and Collaborations

- Rio Pinheiros Call for Proposals: brought together over 100 people to create solutions for improving water quality in São Paulo.
- 2024 RPPN Call for Proposals: supported seven projects to establish private protected areas in the Mantiqueira and Bocaina regions.
- Agreement with Ipanema National Forest: launched a new partnership to strengthen management of a key protected area in the Tietê River basin.



Institutional Alliances

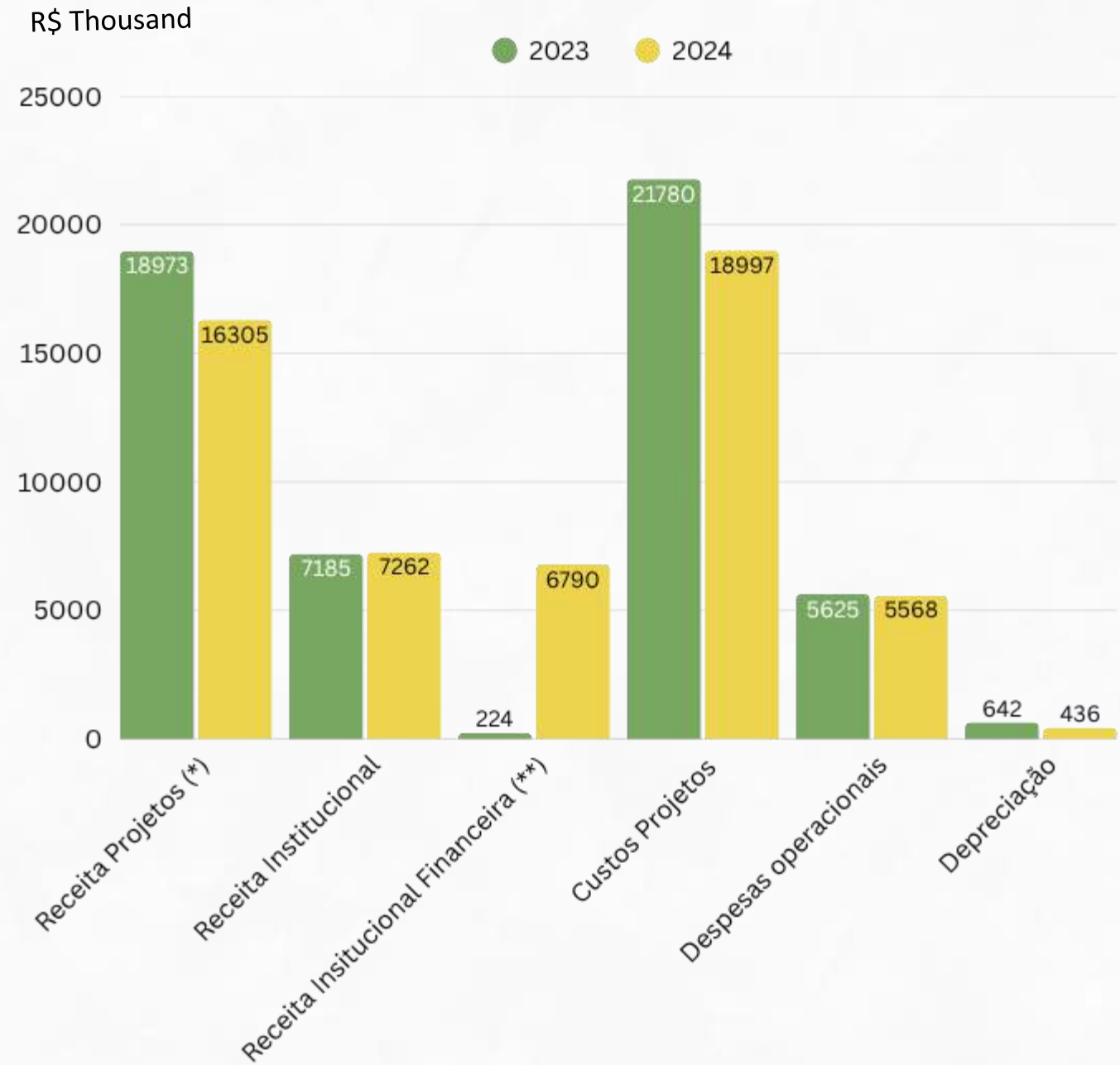
- We took part in networks like the Climate Observatory, Parliamentary Environmentalist Front, Forest Code Observatory, Atlantic Forest Restoration Pact, MapBiomas, Water Governance Observatory and others.
- We continue to work closely with federal, state, and local government agencies, as well as universities, research centers and social movements.

We are grateful to all our partners and supporters who stood with us in 2024. Protecting the Atlantic Forest is only possible through real, collaborative partnerships.

Financial Health and New Partnerships

The 2024 fiscal year was exceptional, with total funding increasing 28.6 percent above projections, and unrestricted funds, which support the institution as a whole, growing by 33 percent. We also expanded into new areas through national and international philanthropy and formed new partnerships with companies of all sizes.

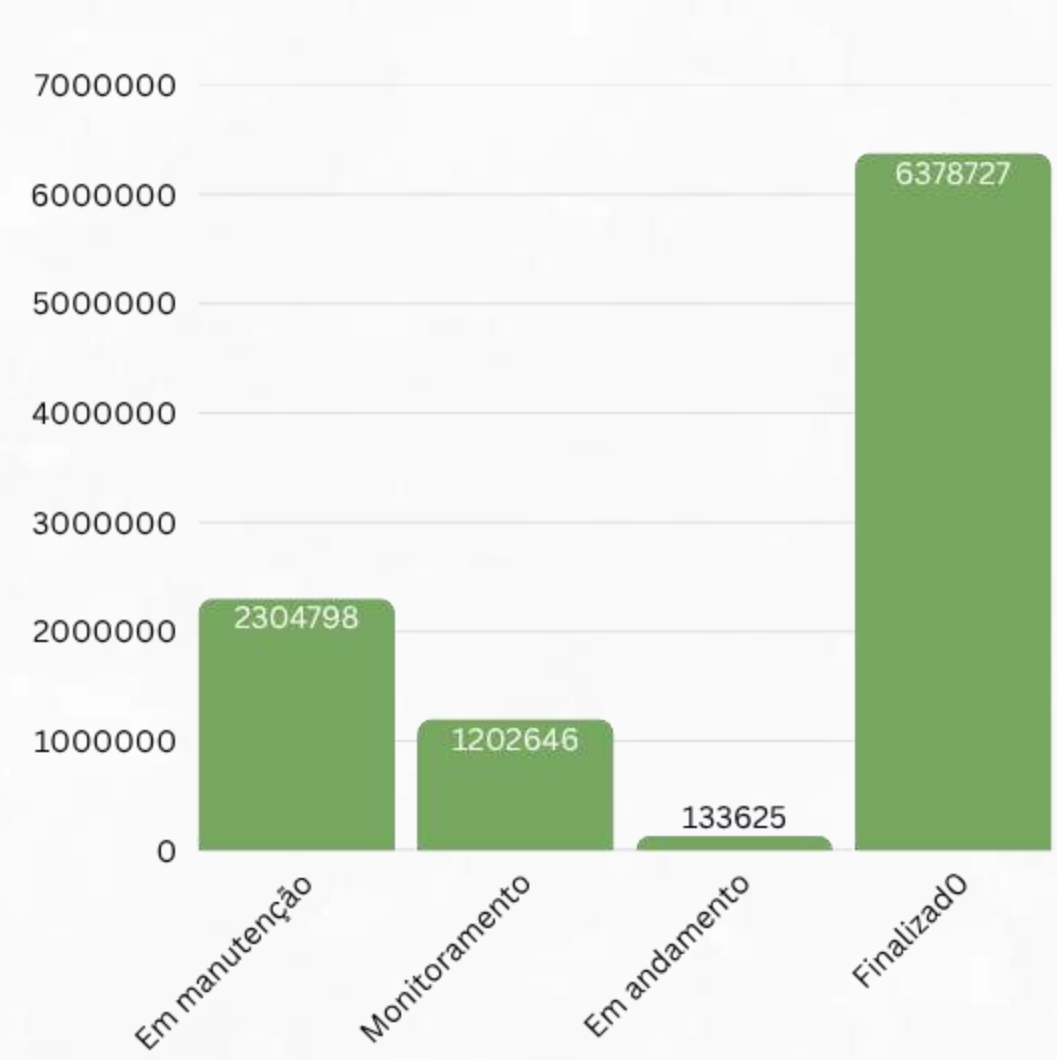
Financial Summary – (2024 vs. 2023)



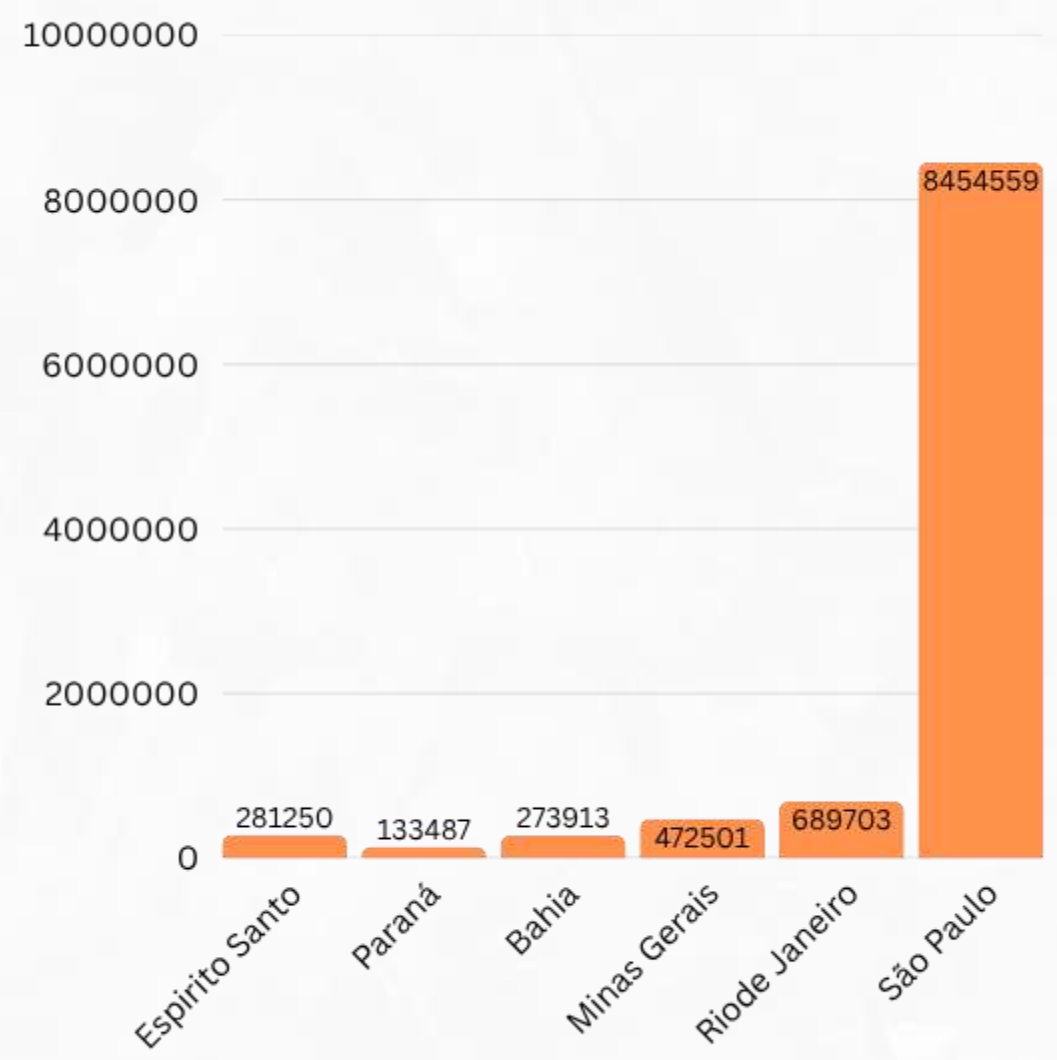
Source: Financial Statement, Dec/2024
(*) The 16% increase refers to new projects launched.
(**) The 97% decrease refers to lower yields from the investment portfolio.

Forest Restoration

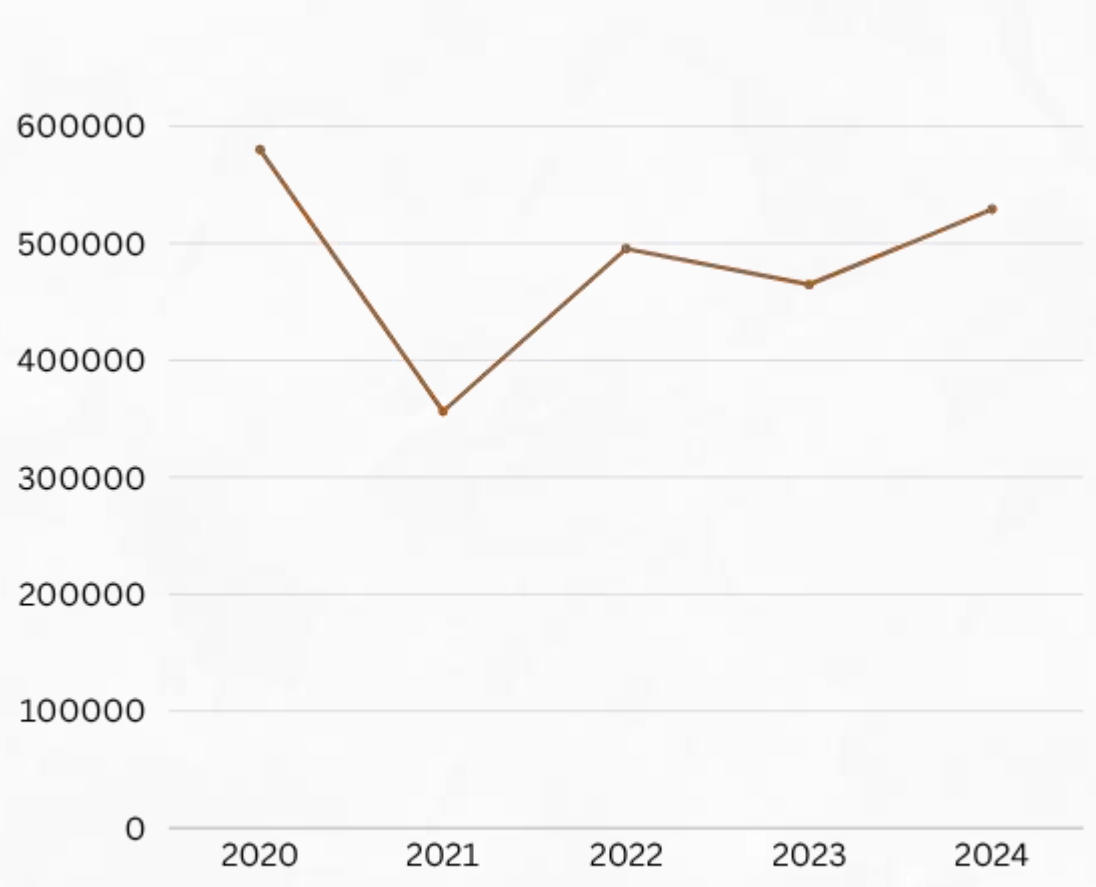
Seedling status, in units



Total seedlings planted per State, in units



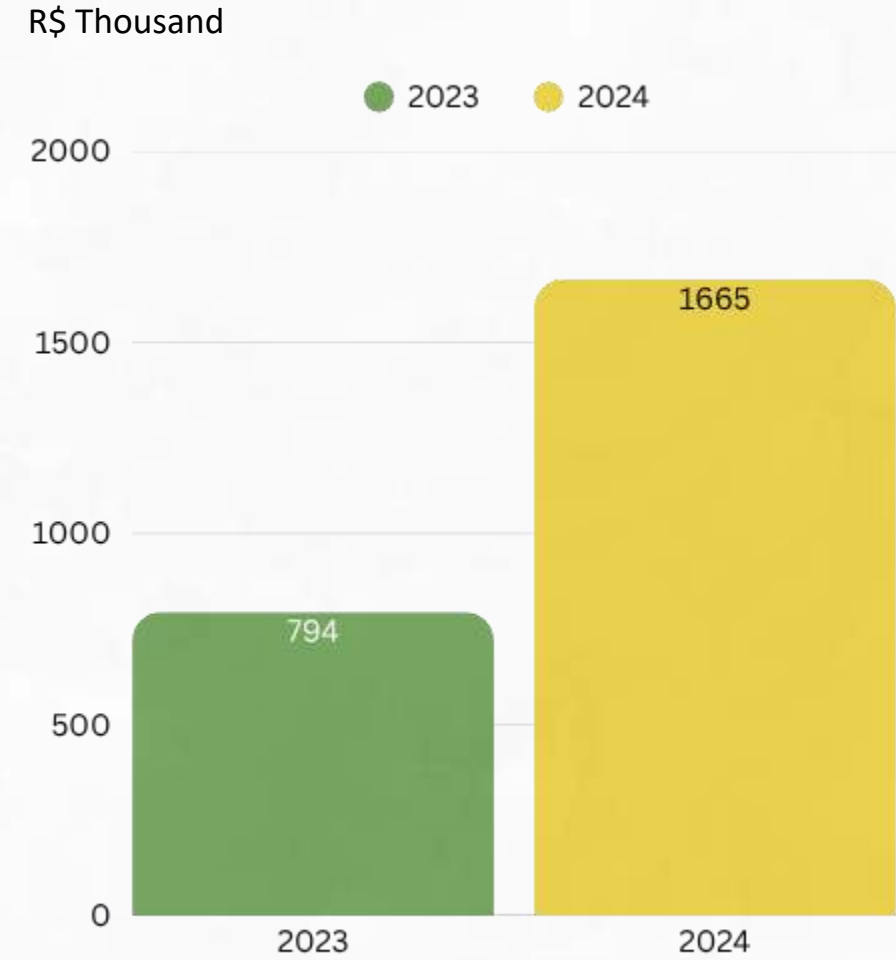
Total trees planted, in units



OBS: Planting is concentrated during the rainy season (October to March).

Source: The SOS Mata Atlântica Project Management System

Protected Areas Program



Source: SOSMA Financial Statement
Total investments in projects within Protected Areas over the past two years.

COMPANIES THAT SUPPORTED SOSMA

- A G GRANJA VIANA ADMINISTRACAO E PARTICI
- AAA IMPACT TREINAMENTO PROFISSIONAL LTDA
- ACD CHAPAS INDUSTRIA E COMERCIO DE ARTEF
- ACE SCHMERSAL ELETROELETRONICA INDUSTRIA
- AERO EMPREENDIMENTOS S.A
- AES BRASIL OPERACOES S.A
- AGIS MINERACAO LTDA.
- AGUAS LINDAS EMPREENDIMENTOS IMOBILIARIO
- AKG DO BRASIL DESENVOLVIMENTO E COMERCIALIZACAO DE SISTEMAS TERMODINA
- AME DIGITAL BRASIL LTDA
- ANDAIMES METAX EQUIPAMENTOS LTDA
- ANIMA INVESTIMENTOS
- ANTONIO ANDRADE EMPREENDIMENTOS IMOBILIA
- APPLAUSI EMPREENDIMENTO IMOBILIARIO 4 SP
- ASIA SHIPPING TRANSPORTES INTERNACIONAIS
- ASSAD ADMINISTRACAO E PARTICIPACOES LTDA
- ASSOCIACAO DE PROPRIETARIOS DO CHAMPS EL
- ASSOCIACAO OSASCO BUSINESS PARK
- AUTOGERACAO SOLAR CANAS CACHOEIRA PAULIS
- AUTOGERACAO SOLAR CANINHAS LTDA
- AUTOPORT TRANSPORTES E LOGISTICA LTDA
- AZ LOTEAMENTO RIOLANDIA SPE LTDA
- AZZANO DECIMO PARTICIPACOES E EMPREENDIMENTOS LTDA.
- BANCO BRADESCO S.A.
- BANCO HSBC SA
- BARUERI VIEW INCORPORACAO IMOBILIARIA SPE LTDA
- BDI REALTY EMPREENDIMENTO IMOBILIARIO 01
- BIOMA COMERCIO DE MOVEIS LTDA (BRETON)
- BLASER TRADING AG
- BLOOMBERG DO BRASIL COMERCIO E SERVICOS LTDA
- BRAINFARMA INDUSTRIA QUIMICA E FARMACEUT
- CAIO DE CAMARGO ANDRADE LTDA
- CALOI NORTE SA
- CARIUMA CENTRAL PTE. LTD
- CAYNE 25 INCORPORADORA SPE LTDA
- CEDROS 04 EMPREENDIMENTO IMOBILIARIO SPE LTDA
- CEVA LOGISTICS LTDA
- CHICO REI MODA COMERCIO ELETRONICO
- CHS AGRONEGOCIO INDUSTRIA E COMERCIO LTD
- CIANO ALIMENTOS SUSTENTAVEIS LTDA.
- CIDADE NAUTICA IMOVEIS SA
- CKBR BEBIDAS LTDA.
- CL CASTELO BRANCO EMPREENDIMENTO IMOBILI
- CMA CGM DO BRASIL AGENCIA MARITIMA LTDA
- COMERCIO E EXTRACAO DE AREIA PEJO LTDA
- COMPANHIA BRASILEIRA DE DISTRIBUICAO
- COMPANHIA PADUANA DE PAPEIS
- CONDOMINIO RESIDENCIAL VILLAGE AZALEIA
- CONGREGACAO CRISTA NO BRASIL
- CONSORCIO DE URBANIZACAO EMBU DAS ARTES
- COOPERATIVA HABITACIONAL PRIMEHOUSE
- CPV HOMES CONSTRUTORA INCORPORADORA LTDA
- CURADEN SWISS DO BRASIL IMPORT. EXPORT. LTDA
- DAIICHI SANKYO BRASIL FARMACEUTICA LTDA
- DELOITTE TOUCHE TOHMATSU CONSULTORES LTD
- DISTRIBUIDORA E EMPACOTADORA DE PRODUTOS ALIMENTICIOS CORDEIRO LTDA.
- ELANCO SAUDE ANIMAL LTDA
- ELETROPAULO METROPOLITANA ELETRICIDADE DE SAO PAULO SA
- EMPREENDIMENTOS IMOBILIARIOS MAIRINQUE S
- FASE FRANQUEADORA LTDA
- FAZENDA RECANTO EMPREENDIMENTO IMOBILIAR
- FERRACO INDUSTRIA E COMERCIO LTDA
- FERROVIA CENTRO-ATLANTICA S.A
- FONDATION LUCIOLE INSTITUT DE FRANCE
- FRIGO COMÉRCIO SP ALIMENTOS E BEBIDAS LTDA EPP
- GAIA SILVA GAEDE & ASSOCIADOS SOCIEDADE DE ADVOGADOS
- GAUDIUM DESENVOLVIMENTO DE SOFTWARE LTDA
- GLOBO COMUNICAÇÃO E PARTICIPAÇÕES S/A
- GREENYELLOW UFV BILLINGS CONSULTORIA E GERAÇÃO FOTOVOLTAICA II LTDA.
- GSP ONE CABREÚVA EMPREENDIMENTOS IMOBILIÁRIOS LTDA.
- HEMPEL FONDEN
- HNK BR INDUSTRIA DE BEBIDAS LTDA

COMPANIES THAT SUPPORTED SOSMA

- HOB EDITORA, TREINAMENTO E CONSULTORIA LTDA.
- IFOOD.COM AGÊNCIA DE RESTAURANTES ONLINE S.A.
- INSTITUTO CLIMA E SOCIEDADE - ICS
- INSTITUTO DA HUMANIDADE
- INSTITUTO ITAUSA
- INSTITUTO SEMEIA
- INSTITUTO SOCIOAMBIENTAL DA BACIA DO ALTO PARAGUAI - SOS PANTANAL
- JADI ADMINISTRACAO DE BENS SS LTDA
- KBPX ADMINISTRACAO E PARTICIPACAO LTDA
- KLABIN S/A
- KN NEGOCIOS IMOBILIARIOS LTDA
- KUEHNE + NAGEL SERVICOS LOGISTICOS LTDA
- LOTS LATIN AMERICA LOGISTICA E TRANSPORT
- LOYLOGIC REWARDS PARTNER PAYMENTS
- LUCKSPUMA INDUSTRIA E COMERCIO LIMITADA
- LYONDELLBASELL BRASIL LTDA
- METALURGICA DULONG LTDA
- MGG INVESTMENT GROUP
- MOL IMPACTO LTDA
- MOVIMENTO FOCOLARES MARIAPOLIS GINETTA
- MRV ENGENHARIA E PARTICIPACOES SA
- MRV LXXXV INCORPORACOES LTDA
- MRV MRL XVI INCORPORACOES LTDA
- MTC 17 EMPREENDIMENTO IMOBILIARIO SPE LT
- MULTIPLUS JACAREI EMPREED IMOBSPE LTDA
- NOVA DELHI INCORPORADORA SPE LTDA
- ONE TREE PLANTED INC
- P.P.K.D. EMPREENDIMENTOS IMOBILIARIOS SPE LTDA
- PACAEMBU TAUBATE - EMPREENDIMENTO IMOBILIARIO LTDA
- PACIFIC PARTNERS ASSESSORIA EM OPERACOES
- PARQUE CASA DE MALAGA INCORPORACOES SPE
- PARQUE RIO SALAS INCORPORACOES SPE LTDA
- PEANUTS WORLDWIDE LLC
- PMI SOUTH AMERICA CONSUMER GOODS LTDA
- POSTO DAS ARTES LTDA
- PROCURADORIA SECCIONAL DA FAZENDA NACIONAL EM VARGINHA
- QUARENTA E UM GUARA EMPREENDIMENTO IMOBI
- QUIMICA AMPARO LTDA
- RAIA DROGASIL SA
- RESERVA DA CACHOEIRA EMPREENDIMENTO IMOBILIARIO LTDA
- RESERVA SAO BENTO EMPREENDIMENTO IMOBILI
- RIMOWA AMERICA DO SUL MALAS DE VIAGEM LT
- SANKONFORT COLCHOES INDUSTRIA E COMERCIO LTDA
- SANT ANA PARTICIPACOES LTDA
- SÃO DOMINGOS SA INDÚSTRIA GRÁFICA
- SAO FRANCISCO EMPREENDIMENTOS LTDA
- SCANIA BANCO SA
- SCANIA CONSORCIO LTDA
- SCANIA LATIN AMERICA LTDA
- SENDAS DISTRIBUIDORA S/A
- SOCIEDADE RESIDENCIAL PORTO SEGURO VILLAGE
- SOCIETY FOR ECOLOGICAL RESTORATION
- SOLARGRID ENERGIA SOLAR COMERCIO E SERVI
- T4F ENTRETENIMENTO SA
- TEGECON TECNICA DE GERENCIAMENTO E CONSTRUCAO LTDA
- TENDA NEGOCIOS IMOBILIARIOS SA
- THE MUDNESS LAB LTDA
- TINTURARIA INDUSTRIAL GUARAREMA LTDA
- TOYOTA DO BRASIL LTDA
- TRANSPORTES CAVALINHO LTDA
- TRINTA E TRES COTIA EMPREENDIMENTO IMOBI
- UK ONLINE GIVING FOUNDATION
- VILAS DO RIO REALIZACOES IMOBILIARIAS LT
- VINCI AGRO PASTORIL ASSESSORIA E PARTIC
- VINTE E NOVE VGP EMPREENDIMENTO IMOBILIA
- VISA DO BRASIL EMPREENDIMENTOS LTDA
- WITZLER ENERGIA E CORRETAGEM DE SEGUROS
- ZINCAGEM MARTINS LTDA

INDIVIDUALS WHO SUPPORTED SOSMA

- ABNER CASTRO
- ABRAHAO SOCHACZEWSKI
- ADELIA YUKO KANNO AD
- ADONIS MAITINO
- ADRIANA BONAN GUSMAO
- ADRIANA MARIA CARDOS
- ADRIELE C M MENEZES
- ADRIELE MARTINS
- AGTO ALEXANDER PEREI
- ALAN ANDRADE SANTOS
- ALBERTO JUNIOR PORTA
- ALESSANDRA FERREIRA
- ALEX RAFAEL BRED A FO
- ALEXANDRA ALVES MORE
- ALEXANDRE ANG
- ALEXANDRE CHAHTAHTIN
- ALEXANDRE CURI
- ALEXANDRE DOS SANTOS
- ALEXANDRE GONCALVES
- ALEXANDRE GUILHERME
- ALEXANDRE L.M.ROCHA
- ALEXANDRE MAKIUCHI M
- ALEXANDRE SCARPARO
- ALEXANDRE SOUZA DOS
- ALIAN DOS SANTOS MON
- ALINE BALEEIRO GALDI
- ALVARO DE SOUZA
- AMARO SANTOS
- ANA ALMEIDA
- ANA BEATRIZ COSSERME
- ANA CAROLINA HEMING
- ANA GABRIELA COSTA L
- ANA LETICIA LUCCA
- ANA LUIZ ALMEIDA SAN
- ANA PAULA DA SILVA L
- ANA PAULA DOS SANTOS
- ANA PAULA TOLEDO LES
- ANA SOUZA
- ANDERSON DA SILVA
- ANDERSON ROBERTO PAZ
- ANDRE AUGUSTO VIEIRA
- ANDRE BRAGANTINI
- ANDRE DE SOUSA LADEI
- ANDRE FONTANEZ BRAVO
- ANDRE GUSTAVO RIGON
- ANDRE JACOB REICHELT
- ANDRE KIMURA DA SILV
- ANDRE LUIS DE CARVAL
- ANDRE NUNES SAPUCAIA
- ANDRE ROCHA ALMEIDA
- ANDRE SERRA ALONSO
- ANDRE SHARTENER
- ANDRE VINICIUS GALLE
- ANDREAS SGUARIO BATI
- ANDREIA LEAL SCHEMID
- ANGELA JESUS
- ANGELA MARIA RUBEL F
- ANGELICA FARIA DE RE
- ANNA PEREIRA
- ANNABEL BUCHAN SITRA
- ANNYE GABRIELY DIEGU
- ANTONI WROBLEWSKI
- ANTONIO A BARELLA
- ANTONIO AUGUSTO DE S
- ANTONIO CARLOS DE MA
- ANTONIO CELSO MOTA F
- ANTONIO NAKAD
- ARTHUR FITZGIBBON
- ARTHUR HENRIQUE FIGU
- ARTHUR NAHAS NEVES
- ARTHUR ROMAN
- AUGUSTO CESAR A DA S
- AUGUSTO F S P L MORA
- AUGUSTO HENRIQUE PIV
- AYL A APARECIDA LOREN
- BARBARA FERNANDES BR
- BEATRIZ ANGELICA ERR
- BEATRIZ COSTA
- BEATRIZ EVELYN DE MA
- BEATRIZ FERREIRA MOR
- BEATRIZ HELENA BUENO
- BEATRIZ LOPES NEVES
- BEATRIZ MARTINS
- BEATRIZ PIDONE
- BEATRYZ SANCHES VITA
- BERNARDO MACHADO LOW
- BERNARDO VEIGA
- BIANCA CAROLINE GRIV
- BIANCA FERREIRA PANI
- BIANCA FONTES DA SIL
- BIANCA SOUZA
- BRENDER GUEDES MORA E
- BRENO BASTOS FERNAND
- BRENO M FELISBELO
- BRIVALDO P S JUNIOR
- BRUNA STAMBERG AGUIA
- BRUNO DE PINHO SCHET
- BRUNO FERREIRA ANDRA
- BRUNO JUNICHI BEZERR
- BRUNO LEONARDO RODRI
- BRUNO PIERIN FURIATI
- BRUNO SCOMPARIN
- BRUNO ZANETTI RIBEIR
- CAIO CATHARINO
- CAIO FELIPE MARIANO
- CALIANDRA DOS SANTOS
- CAMILA APARECIDA DE
- CAMILA BRETAS SANTOS
- CAMILA DA SILVA GALA
- CAMILA DEBONI XAVIER
- CARINA DIAS STAMILE
- CARLOS EDUARDO CORRE
- CARLOS EDUARDO OLIVE
- CARLOS EDUARDO SANTO
- CARLOS GASTAO TASSAN
- CARLOS LEONARDO L NO
- CAROL SACRAMENTO
- CAROLINA FERREIRA DE
- CAROLINA PERNUMIAM O
- CAROLINE ALINE MELEN
- CAROLINE OLIVEIRA DO
- CAROLINE YURIE KIKUC
- CATIA GUEDES CHAGAS
- CAUA BARCELOS REIS
- CECILIA ALBANO
- CECILIA CAMARGO BART
- CELSO EVARISTO SILVA
- CELSO R L GARCIA
- CESAR HENRIQUE WULK
- CINTIA GOMES DOS SAN
- CLARA LE BAIL
- CLARISSA
- CLAUDIA MARTINS CLAU
- CLAUDIA REGINA CANDI
- CLESIA MARIA SCHMITZ

INDIVIDUALS WHO SUPPORTED SOSMA

- CLOVISNALDO BEZERRA
- CRISTIANE
- DAFNE M T P DE SOUSA
- DAIANE VIRGINIA ALVE
- DANIEL COSTA BUCHER
- DANIEL DE OLIVEIRA L
- DANIEL EIJI MARTINS
- DANIEL GOMES DE OLIV
- DANIEL LUIZ VIEIRA
- DANIEL MAFRA
- DANIEL SANTA LUCIA
- DANIELA JINZENJI
- DANIELE BERTACO RAMI
- DANIELLE VILELA DOS
- DANILO AMARAL
- DANILO C GRASSO
- DANTE PASSARELLI
- DAVID BAILER
- DAVID NICOLAS CHAZE
- DAVY AUGUSTO DOS REI
- DENISE MELO
- DENIZE ALMEIDA DE BR
- DIEGO CESAR LEONEL D
- DIEGO DA COSTA LARAN
- DIEGO PRADO
- DIEGO RODRIGUES COUT
- DIOGO CARLOS ROCHA

- EDELOI KENDY MATSUDA
- EDGAR
- EDILSON PASCHOAL LOP
- EDMEA FERREIRA GOMES
- EDUARDO ADALBERTO DE
- EDUARDO LUIZ MIRANDA
- EDUARDO NEVES
- EDWARD SELDEN KINGSN
- ELAINE TIMOTHEO COEL
- ELAIS ANDRADE DE SOU
- ELIANA GOMES DA SILV
- ELIANE HARUMI KANDA
- ELISABETH THERESA SE
- ELOAH BEZERRA SILVA
- ELOISA LIZOT
- EMERSON DELA VALE
- EMILY C M EVANGELIST
- EMIR EMPINOTTI
- ERICH BELETTI
- ERICK ARISI MOURA
- ERICK E A S SOBRINHO
- ESTELA CAVALCANTE
- ESTEVAO SOARES AMORI
- EVERSON MATOS
- EVERTON C D ALVES
- FABIANA LAUTON SOARE
- FABIANA MORAIS

- FABIO ARAUJO PIRES
- FABIO DE ALMEIDA PRA
- FABIO DOS REIS
- FABIO LUIZ IANSEN
- FABIO TECH
- FATIMA K SILVA FARIA
- FATIMA PITTELLA DA S
- FELIPE
- FELIPE ANDRADE D TOF
- FELIPE BORGES
- FELIPE DE ANDRADE CA
- FELIPE GUILHERME DE
- FELIPE SOARES ALVES
- FELIPE SPEGGIORIN H
- FERNANDA ELIMELEK
- FERNANDA M ABUKAWA
- FERNANDA MAGALHAES D
- FERNANDA NAOMI HOTA
- FERNANDO CESAR DE SO
- FERNANDO COTAIT MALU
- FERNANDO SCAPOL
- FERNANDO VALENTIM MA
- FLAVIA ALONSO REZEND
- FLAVIO ALTINIER MAXI
- FLAVIO AUGUSTO ESTEV
- FLAVIO MESQUITA
- FRANS SCHOENMAKER

- FRIEDERIKE CACILIE S
- GABRIEL BARREIRA M L
- GABRIEL GUTIERRI DA
- GABRIEL HENRIQUE BIS
- GABRIEL LEVY GOMES R
- GABRIEL RIBEIRO SOUS
- GABRIEL ZACARELI GUI
- GABRIELA CAMARGO FER
- GABRIELA NARDY DE VA
- GABRIELA RIBAS AMADO
- GABRIELA RODRIGUES A
- GABRIELE RIZZI BACHI
- GERSON GONCALVES DA
- GIANCARLO BALZANO
- GIOVANA SANTOS
- GIOVANNA DE ASSUNCAO
- GIOVANNI SIMONETTI C
- GIULIA JESUS SOARES
- GLAUCO BICALHO SYDNE
- GONCALO ABECASIS DA
- GRACIELA SANTOS DA S
- GUILHERME ARBEX BUON
- GUILHERME AUGUSTO CO
- GUILHERME BILIA SALA
- GUILHERME ELIAS RODR
- GUILHERME LUIZ SARRO
- GUILHERME MARCEL DIA

- GUILHERME RIBEIRO MA
- GUILHERME SARMENTO
- GUSTAVO BRAGANÇA DE
- GUSTAVO DE MELLO MOZ
- GUSTAVO FAZANI
- GUSTAVO SERGIO MAGAL
- HANNA DORAZIO BROCKH
- HEITOR MINORU TAKAHA
- HELENA H CONTI CAMPO
- HELOISA DE OLIVEIRA
- HENDRYK GEMEINER
- HENRIQUE DE CAMARGO
- HENRIQUE MAGALHAES D
- IGOR C MIYAHIRA
- IGOR DE ARAGAO
- IGOR LOPES DA SILVA
- IGOR PEREIRA BARABAC
- IGOR V S L OLIVEIRA
- IRENE FERREIRA AZEVE
- IRINEU PEREIRA GONZA
- ISABELA BUSTAMANTI
- ISABELLA MUSUMECI AR
- ISABELLE M S FERREIR
- ISABELLE MENDES SAMP
- ISAQUE RODRIGUES DE
- ISRAEL CRUCITI MARTI
- IURY MENDES DA SILVA

INDIVIDUALS WHO SUPPORTED SOSMA

- IVANA MARIA SOUZA VA
- JAMIL SAUD MARQUES
- JANAINA APARECIDA BU
- JAQUELINI ARAUJO FRE
- JASMIM N AGOSTINHO S
- JEFFERSON LUCAS AMOR
- JENNIFFER MARIANNE W
- JESSICA LUCIANO
- JESSICA MARCHESI BAR
- JESSICA MARTINS
- JESSICA NATALIA DO N
- JHONATA COIMBRA DE O
- JHONATAN TEIXEIRA VA
- JOAO ABREU
- JOAO BATISTA DO NASC
- JOAO DABBUR
- JOAO FELIPE
- JOAO GOMES DE SOUZA
- JOAO HENRIQUE ALLIPR
- JOAO HENRIQUE LOPES
- JOAO LUIZ DE ARRUDA
- JOAO PAULO ALVES FRA
- JOAO PEDRO CARDOSO C
- JOAO PEDRO DE LIMA N
- JOÃO VICTOR BALESTRA
- JOAO VITOR LOSCHI CA
- JONATHAN DA SILVA

- ANTONIO NAKAD
- JOSE ARMINDO TAVARES
- JOSE CARLOS DA S E S
- JOSE CARLOS VICENTE
- JOSE FELIPE
- JOSE FERNANDO LEWING
- JOSE LUCIANO VIEIRA
- JOSE ROBERTO
- JOSENILSON DE CASTRO
- JOSILENE BESSA BARBO
- JUAN DE CASTRO PESSO
- JULIA KARIN STRAUSS
- JULIA TRAVAGLINI
- JULIA WOOD SOARES
- JULIANA DE FATIMA DO
- JULIANA LIMA
- JULIANA PEREIRA
- JULIANO CARVALHO ZUC
- JULIO CESAR GUIDETTE
- JULIO EDUARDO M GUER
- JULIO GOBBO NETO
- JULYANNA M REIS DE M
- KAREN CAROLINE BORGE
- KARIN
- KARINE APARECIDA SIL
- KATIA BATISTA DE LIM
- KATLLYN FERNANDA DE

- KAUA HENRIQUE SANTOS
- KAUAN DOS SANTOS GOM
- KAUAN SANTANA DA COS
- KESSIA ALVES
- KLEBER S.DA CRUZ
- LAERTES BARBOSA SILV
- LAIS GOMES DA SILVA
- LALESKA ROSSI MODA
- LARISSA ALVES
- LARISSA AOKI MACENA
- LAURA PAULUCCI MARIN
- LEANDRO C BETTINI
- LEANDRO DELLA
- LEONARDO ALONE
- LEONARDO AMARAL SCHA
- LEONARDO FERNANDES D
- LEONARDO FERRAZ
- LEONARDO OLIVEIRA
- LETICIA NEUMANN B DE
- LEVI HIGINO JALES
- LIGIA A DE OLIVEIRA
- LILIAN MARIA RIBEIRO
- LILIAN MORELLI PINTO
- LILIAN VIANA
- LILIANE SILVA MACEDO
- LIZANDRA KAREN DE LI
- LORNA LYNN BURLEIGH

- LUAN ANTONIO
- LUAN FELIPE VELOSO D
- LUAN SIMIAO FERREIRA
- LUANA SANTOS DE ALME
- LUANA SILVA CARDOSO
- LUCAS ABRANCHES
- LUCAS ALCANTARA DOS
- LUCAS ALONE
- LUCAS ASSIS
- LUCAS B. ESPINDOLA
- LUCAS DE SOUZA PEREI
- LUCAS FLORIANO GIL A
- LUCAS GONCALVES MESS
- LUCAS MARCONDES ARAU
- LUCAS MATEUS CODOGNO
- LUCAS RENAN AGUIAR N
- LUCAS VIALE DE OLIVE
- LUCAS VIDON GALVAO D
- LUCIA DA SILVA
- LUCIA REGINA DOS SAN
- LUCIANA LEITE DE ARA
- LUCIANO ARBEX SARKIS
- LUCIANO CARVALHO
- LUCIANO N DOS SANTOS
- LUCILENE MORANDI
- LUDMILA P SANTOS SOU
- LUIS CARLOS BARBON

- LUIS CARLOS GUEDES P
- LUIS CARLOS RAMIREZ
- LUIS CLAUDIO NAGALLI
- LUIS EDUARDO DOSSO
- LUIS FELIPE CAVALCAN
- LUIS FELIPE MARIN BA
- LUIS PRADO
- LUISA BORGES
- LUISA KONZEN
- LUIZ ALBERTO KUCHENB
- LUIZ ANTONIO DA SILV
- LUIZ CARLOS
- LUIZ EDUARDO ORTIGAR
- LUIZ FERNANDO DE MED
- LUIZ GARRIDO
- LUIZ QUIRINO
- LUIZ R. MAYR
- LUIZ ZOMIGNANI
- MAIKE ALEX FOGACA
- MARCEL VIDAL VIESSER
- MARCELLA COSTA MOREI
- MARCELO ALVES
- MARCELO DE OLIVEIRA
- MARCELO FONSECA RIBE
- MARCELO HENRIQUE DOS
- MARCELO PAOLI GRACIA
- MARCELO TORRES AVILA

INDIVIDUALS WHO SUPPORTED SOSMA

- MARCIA FABRICIA GOME
- MARCILIO P SANTANA
- MARCO ANTONIO GRAZIA
- MARCO AURELIO DE SOU
- MARCO AURELIO LIMA D
- MARCO AURELIO R VIN
- MARCO COUTO FERREIRA
- MARCOS FLAVIO CAMARG
- MARCOS MION
- MARCUS M GUIMARAES
- MARIA ANGELICA MONTE
- MARIA APARECIDA
- MARIA APARECIDA GREG
- MARIA BEATRIZ GENTIL
- MARIA CRISTINA B AMA
- MARIA E B GALDINO
- MARIA FERNANDA BELON
- MARIA GIULIA MENEZES
- MARIA HELENA BRONOWS
- MARIA HELENA DE TOLE
- MARIA LUCIA FALCAO F
- MARIA LUIZA PESSOA L
- MARIA MALAGRE PAIN
- MARIA SILVANIA ANDRA
- MARIANA ARY
- MARIANA FERREIRA LAV
- MARIANA GHERCOV COPI
- MARIANA MASSAE KAZAM
- MARILIA VARGAS DOS S
- MARINA ESTEFANO SALO
- MARINEUSA NAGAYA KAS
- MARINEZ MORAL MONTAN
- MARIO ALVES
- MARIO ARTHUR FAVRETT
- MARIO ERNESTO MASSAG
- MARISTELA SILVA BRET
- MARLENE FOCKINK
- MARYANA BAIOCO
- MATEUS DAL FABBRO
- MATEUS LIRA DE OLIVE
- MATEUS SENHUKA
- MATHEUS DE JESUS SOL
- MATHEUS H. TAVARES
- MATUSAEI RAMOS
- MAURICIO ARLATI SILV
- MELISSA BELKISS RIBE
- MELISSA NAOMI FUKUSH
- MICHELE SCHULZ DOS R
- MIGUEL ALEXANDRE
- MIGUEL FRANCISCO DA
- MIGUEL M ALVARENGA
- MIRIAN LOURDES M ZET
- MONALIZA BORGES
- MONICA LUMI BUENO
- MORGANA SARRO
- MURIEL DE O. GAVIRA
- MURILLO MANTEGA MASS
- MURILO CARDOSO DE MI
- NAMIR BUENO
- NAOMI NASCIMENTO
- NATALIA GUERRIN
- NATALIA NASCIMBEN
- NATALIA RISTER PORTI
- NATAN SANTOS
- NATHALIE ANDREA COUR
- NATHANAEL BARBOSA DE
- NELSI T SCARTEZINI
- NICOLAS MICHELS DA C
- NICOLY SABRINA PEREI
- NIDIA CELESTE HORIE
- NIVALDO R. FONTES
- OCTAVIO CORREA DE AR
- ORIANA VIVEROS DE MO
- OSWALDO DE ALMEIDA S
- PABLO HENRIQUE ASSUM
- PAMELA FELIX
- PAMELA PALMA GOMES
- PATRICIA DE JESUS AL
- PATRICIA R CALIXTO
- PAULA BERNARDE A SAN
- PAULA ROMANO
- PAULA THOMPSON DE MO
- PAULA YUKIE SAKAI PA
- PAULINA ACHURRA
- PAULO AMERICO MOURA
- PAULO EDUARDO FARIA
- PAULO JOSE MACEDO DA
- PAULO M A FERREIRA
- PAULO POVOA
- PAULO ROBERTO MEDEIR
- PAULO TRINDADE DE MA
- PEDRO ALONE
- PEDRO ARTHUR DE SOUS
- PEDRO BARROSO MIRAND
- PEDRO CAVALHEIRO RIB
- PEDRO FELIPE
- PEDRO HENRIQUE BEZER
- PEDRO LUCAS RODRIGUE
- PEDRO MAURANO
- PELUDO SANTSOP
- PERLA ANDREOLLA
- PIERO MATTOS MAZZAMA
- PRISCILA DE CASSIA D
- PRISCILEIDE OLIVEIRA
- RAAB IANE ASSUNCAO S
- RACHEL PAULE MAYER
- RAFAEL DE NIGRIS CHA
- RAFAEL DE SOUZA PRAD
- RAFAEL DONATE RAFAEL
- RAFAEL PERECIN FOLTR
- RAFAEL S SUGUIURA
- RAFAELA OLIVEIRA MEL
- RAFAELL SANTOS REINB
- RAFAELLA GONCALVES C
- RAIANE MENDES MARTIN
- RANICA FAGUNDES RIBE
- RAPHAEL A VICENTE AG
- RAPHAELLA FERNANDES
- RAYSSA BARBOSA DOS S
- RENAN AMBROSIO GAMBE
- RENATA ALVAREZ GOES
- RENATA CHACON VIANA
- RENATO HAMA
- RENATO LUIZ MARCHETT
- RENATO MATERA
- RENATO VILASBOAS DOS
- RICARDO ARAGAO PETRO
- RICARDO DA SILVA GAR
- RICARDO MENEZES YAMA
- RICARDO RODRIGUES RI
- RICHARD DENIS STEVEN
- RMITO71
- ROBERT SOUZA BATISTA
- ROBERTA FRANSIN PAIV
- ROBERTO CARDOSO UBRI

INDIVIDUALS WHO SUPPORTED SOSMA

- RODOLFO SZMIDKE
 - RODRIGO ABE CASTRO F
 - RODRIGO ALMEIDA
 - RODRIGO BASSAN ALVES
 - RODRIGO DE OLIVEIRA
 - RODRIGO FERREIRA CAL
 - RODRIGO GOMES
 - RODRIGO GOMES DE OLI
 - RODRIGO GUIMARÃES
 - RODRIGO METZNER
 - RODRIGO ROCHA MARCON
 - RODRIGO SANTOS
 - RODRIGO SOUSA MADEIR
 - ROMULO AURELIO CECCO
 - ROSANA LIMOEIRO
 - RUBENS DOS SANTOS RO
 - RUBENS GOMES LEAL
 - RUBENS XAVIER DE LIM
 - RYAN WEEGE ACHJIAN
 - SABRINA DE OLIVEIRA
 - SABRINA GALVAO DE FR
 - SANDRA MACEDO PEREIR
 - SEBASTIAN GATICA
 - SERGIO EVANGELISTA
 - SERGIO RAMOS FAVARIN
 - SEVERINO JOSE DA SIL
 - SIDNEY TAMAI
- SILVA
 - SILVANA CELESTINO
 - SILVIA MANDADO TOSTA
 - SILVIA MIYUKI HASEBE
 - SILVIA VENTURA LOPES
 - SILVIO TADEU DE A CA
 - SIMONE AIRES DE SA
 - SIMONE SAISSE LOPES
 - SOFIA CORREA HALFEN
 - SOFIA LUIZA DE LIMA
 - SORAIA AMARAL CAVALC
 - STEFANIE LIMA HORNOS
 - SUELLEN G D OLIVEIRA
 - SUZANA ARAUJO DA SIL
 - SUZANA DOS SANTOS SI
 - TACIANO LUIZ COIMBRA
 - TAIS CRISTINA MORAES
 - TAMARA DE OLIVEIRA C
 - TARO JINBO
 - TATIANA ALVES RIBEIR
 - TATIANA L SALCIOTTO
 - TEREZA C S BRETAS
 - THAIS DE CASTRO STOP
 - THAIS LOURENCO OLIVE
 - THAIS SOARES GUIMARA
 - THALESSA CAROLINE SA
 - THALYTA DOS SANTOS S
- THATIANE B ANGELI
 - THAYNA
 - THAYRINE VIEIRA PERE
 - THIAGO DE MOURA BEZE
 - THIAGO GHIDONI MANTO
 - THIAGO H MATTOS SILV
 - THIAGO LUIZ DE SOUZA
 - THIAGO PORTO HORTA
 - THOMAS BELTRAME
 - THOMAS FALCOMER KOET
 - THOMAS KRISTIAN KISS
 - ULRIKE G GENNARI
 - VALDIRENE BEZERRA DA
 - VALENTINA MARTINS FE
 - VANESSA GOMES SANTOS
 - VANESSA KRISTINNE IL
 - VANESSA SOARES CAMAR
 - VANIA CRISTIANE FLOR
 - VERA LUCIA GONCALVES
 - VICTOR MIGUEL VILLAR
 - VICTOR PABLO J M SIL
 - VIKTORIA HERNATZKI
 - VINICIUS BUSOLIN CAR
 - VINICIUS HENRIQUE BO
 - VINICIUS M ARAUJO
 - VINICIUS SEBASTIAO D
 - VINICIUS SILVA MARAN
- VITOR BARBOSA GERMAN
 - VIVECA SANT ANA
 - VIVIAN R FERREIRA
 - VIVIANE C ANTOLINI
 - VIVIANE DA SILVA
 - VIVIANE SILVA DE MED
 - WALLISON XAVIER PERE
 - WALTER MINUCELLI JUN
 - WENCESLAU ISHIDA
 - WESLEY A B MARTINS
 - WESLEY S DA SILVA
 - WILLIAM QUEIROZ FERN
 - YARA RODRIGUES AMORI



CREDITS

2024 Annual Report

Writing

Marina Vieira and Marcelo Bolzan

Editing

Afra Balazina

Contributors

Aislan Silva, Carlos Abras, Diego Igawa Martinez, Gustavo Veronesi, Kelly De Marchi, Luís Fernando Guedes Pinto, Marcia Hirota, Maria Luísa Ribeiro, Olavo Garrido and Rafael Bitante Fernandes

Image Research

Andrea Herrera and Marina Vieira

Editorial Production

Marcelo Bolzan / Estúdio Verbo

Graphic Design and Layout

Marcelo Gava

Proofreading

Ana Cíntia Guazzelli / Guazzelli Comunicação Socioambiental

Translation

Janaina Ribeiro